

KEMET

a YAGEO company



Overview

The KEMET GTX plastic case filters cover single-phase EMC requirements with a wide variety of characteristics. By using nanocrystalline core material, these filters achieve excellent attenuation characteristics in a compact size. In addition, 6 different combinations of Y capacitors can be selected to support various inverter topologies. These filters are compact and lightweight due to its high mechanical density.

Product Highlights

- Nanocrystalline core material
- Selection of Y capacitors combinations
- Compact and lightweight
- Operating temperature range from -25°C to +55°C
- UL, c-UL, and TÜV approved, for 250 VAC only
- RoHS compliant

Electrical Characteristics

- Rated Voltage: 250 VAC | 560 VDC
- Rated Current Range: 6 - 30 A
- Withstanding Voltage: 1,500 VAC (1 minute, line to ground)
- Insulation Resistance: 300 MΩ minimum at 500 VDC (1 minute, line to ground)
- Leakage Current Range: 0.01 - 4.6 mA maximum at 250 V/60 Hz
- Input / Output Terminal Type: Screw

Typical Applications

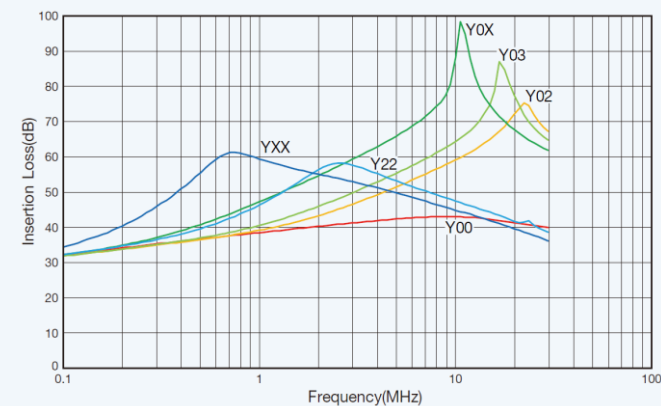
- Noise suppression for electronic equipment
- Industrial equipment
- General purpose inverter
- Commercial equipment (vending machine, ATM, cash register)
- White goods (coffee machine, massage chair)
- Medical equipment

GTX Single-Phase Filters

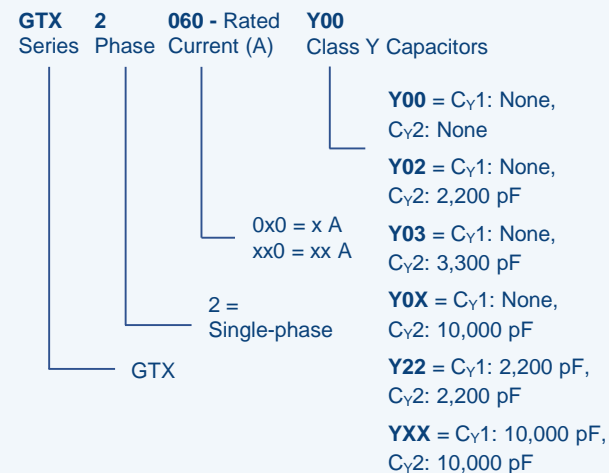
Y Capacitor Specifications

Class Y Capacitors	C _{Y1}	C _{Y2}	Leakage Current at 250 V/60 Hz
• Y00	-	-	0.01 mA Maximum
• Y02	-	2,200 pF	0.50 mA Maximum
• Y03	-	3,300 pF	0.75 mA Maximum
• Y0X	-	10,000 pF	2.30 mA Maximum
• Y22	2,200 pF	2,200 pF	1.00 mA Maximum
• YXX	10,000 pF	10,000 pF	4.60 mA Maximum

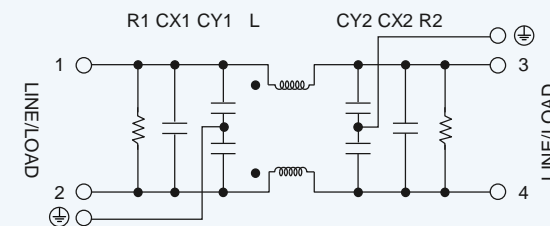
Attenuation Characteristics



Part Number System



Circuit Diagram



Dimensions - Millimeters

