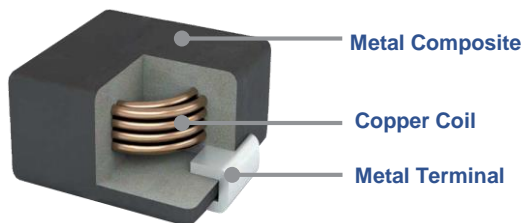




Overview

METCOM power inductors are ideal for automotive designs using DC to DC switching power supplies as well as EMI filter. Our metal composite core has high saturation characteristics ideal for applications requiring stable inductance across temperature and current. The high heat resistance propriety of the inductor has been further improved and allows for operating temperature up to **+180°C** with outstanding performance on the insulation resistance

Construction



Automotive Applications

- Engine Control Units (ECU)
- LED headlights
- Meter cluster panels
- Head-up displays (HUD)
- Electric water pumps (EWP)
- Electric oil pumps (EOP)
- Electric power steering (EPS)

AUTOMOTIVE GRADE SMD INDUCTORS

METCOM Power Inductor MPEV Series

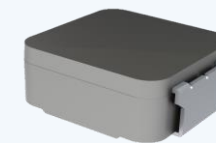
Electrical Characteristics

Operating Temperature	-55°C to +180°C
Rated Inductance	0.47 – 47 μ H at 100 kHz (\pm 20% tol.)
Rated DCR	2.4 – 186.3 m Ω maximum
Rated Current	2.7 – 26.4 A

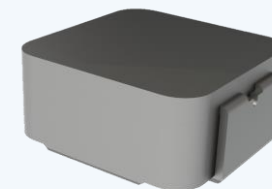


AEC-Q200

Qualified

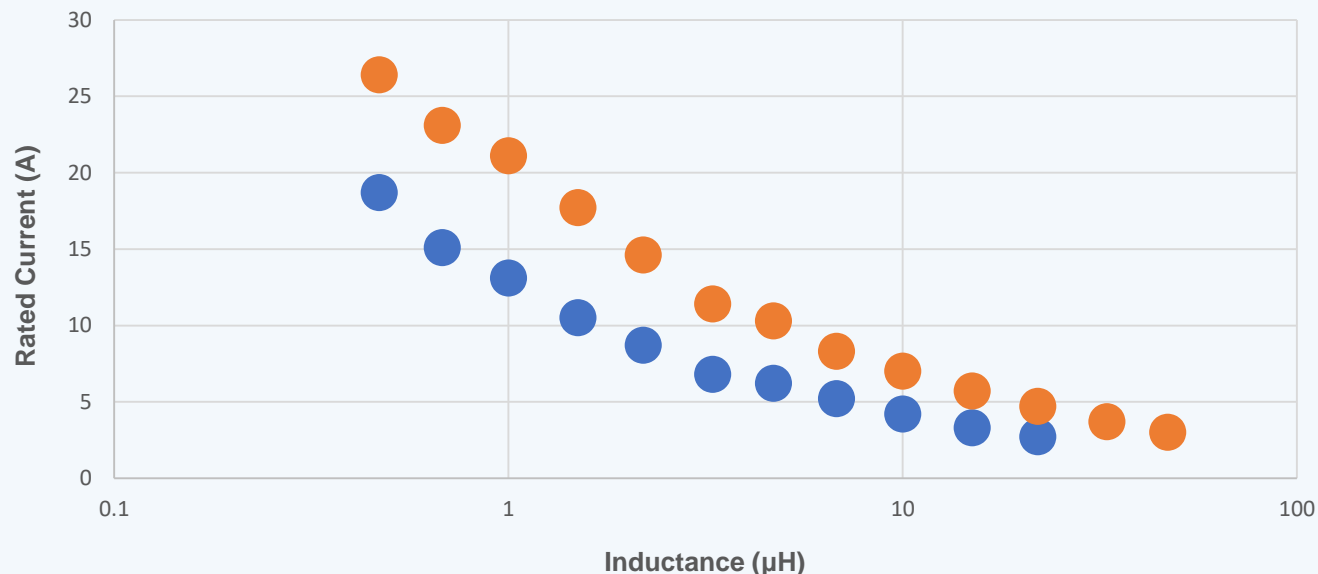


D0630

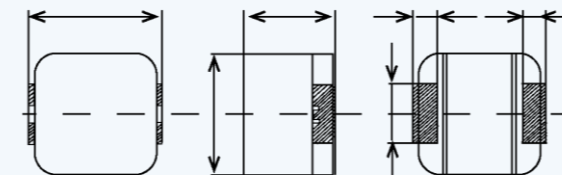
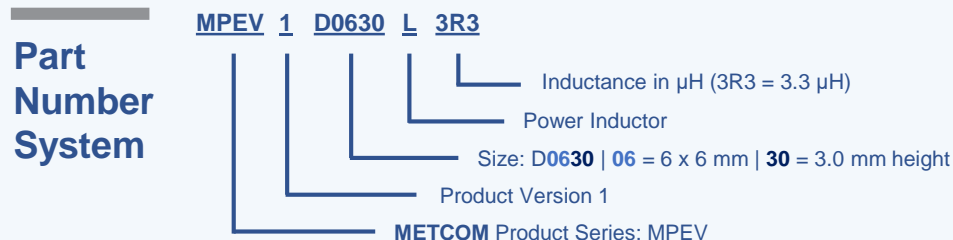


D1040

METCOM MPEV Series Selection Guide



6x6 mm (Height)
● D0630 3.0 mm
10x10 mm (Height)
● D1040 4.0 mm



www.kemet.com/metcom